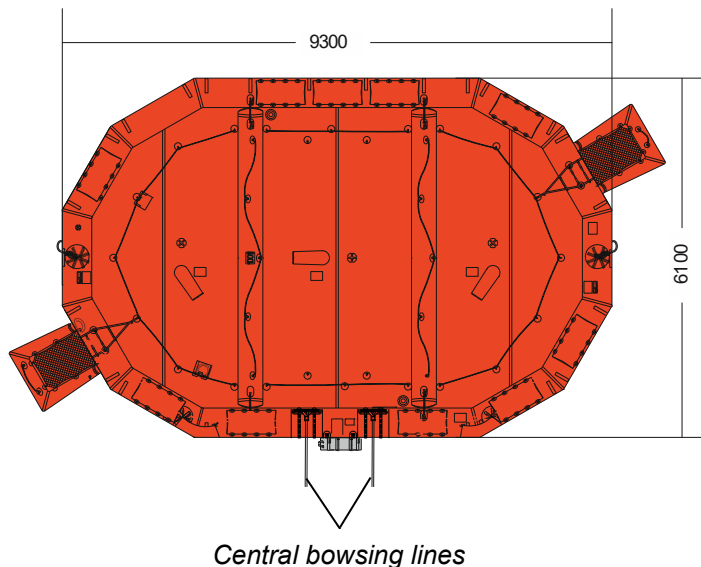
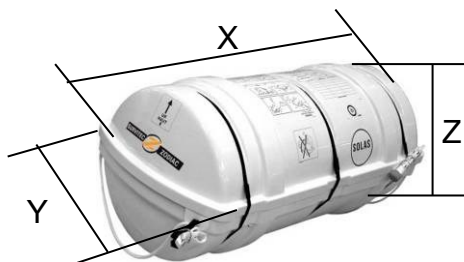
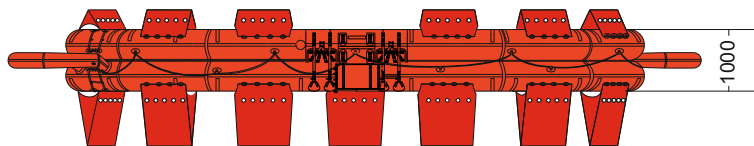
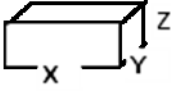


## ORIL 100 WITH CENTRAL BOWSING LINES



100 MAN CBL	HSC PACK		
<b>Container</b>	<b>N18</b>		
Dimensions	X: 1560 mm	Y: 852 mm	Z: 835 mm
	X: 5' 1,42"	Y: 2' 9,55"	Z: 2' 8,88"
Liferaft Net Weight	330 kg / 728 pounds		
Max. height stowage	20 m / 66'		
Painter line length	20 m / 66'		
Inflation Cylinder	4 x 20 liter		

 <b>Crate</b>	X: 1650 mm	Y: 940 mm	Z: 1010 mm
	X: 5' 4,97"	Y: 3' 1,01"	Z: 3' 3,77"
	385 kg / 849 pounds		
1,567 m3 / 55,32 cubic foot			

<b>Towing force</b>	<b>2 knots</b>	<b>3 knots</b>
Without sea anchor	196 daN	315 daN
With sea anchor	232 daN	420 daN

<b>Approvals:</b>	<b>EC</b>
-------------------	-----------

ORIL 100 CBL.doc	Issue: 1	Date: 28/10/2015
------------------	----------	------------------

Dimensions and weight +/- 5%  
 SURVITEC SAS reserves the right to change specification without notice.  
 For installation, add minimum +10mm for clearance to dimensions of the container.