

## RESCUE BOAT RIBO 600 SLING



### Overview

RIBO 600.doc

Issue: 11

Date: 27/05/2021

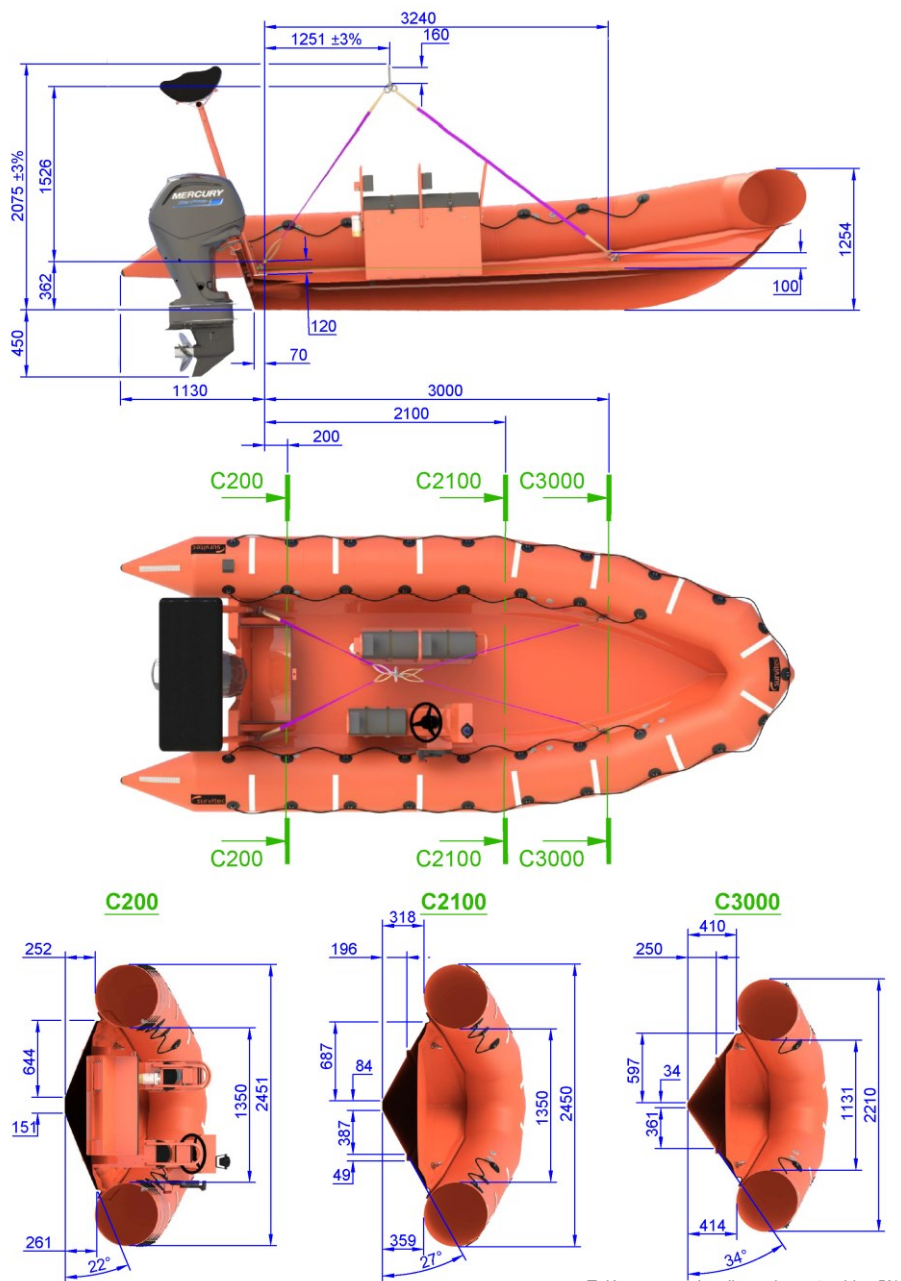
Dimensions and weight +/- 5%  
SURVITEC SAS reserves the right to change specification without notice.  
For installation, add minimum +10mm for clearance to dimensions of the container.

CAPACITY				
Number of persons: 6			Buoyancy volume: 2600 l / 92 cft	
DIMENSIONS				
Length		Width		Buoyancy diameter
Overall	Inside	Overall	Inside	0.550 m / 22"
6 m / 19'08"	4.47 m / 14'08"	2.45 m / 8'	1.35 m / 4'05"	
SAFETY / INFLATION				
. 5 airtight compartments		. 5 inflation valves		. 5 overpressure valves
WEIGHT				
With equipment & batteries		With equipment, engine (90 HP) & fuel		Operational weight with 6 passengers (90 HP)
494 kg / 1089 lbs		785 kg / 1730 lbs		1283 kg / 2828 lbs
ENGINE				
Shaft length		Engine power		Fuel tank
long		70 HP	90 HP	85 l 22.5 l USCG
TOWING				
. 2 bow towing rings on hull		. 1 bow towing V with on load release shackle		
. 2 towing points on transom		. 1 aft towing V with snap hook		
HOISTING				
. 2 bow lifting points		. 2 aft lifting points on transom		. 1 lifting sling
FABRIC				
. Neoprene orange fabric		. Buoyancy		
. Reflective tapes		. Peripheral rubbing strake		
HULL				
. GRP composite rigid orange hull		. Reflective tapes		
. 1 hull drain				

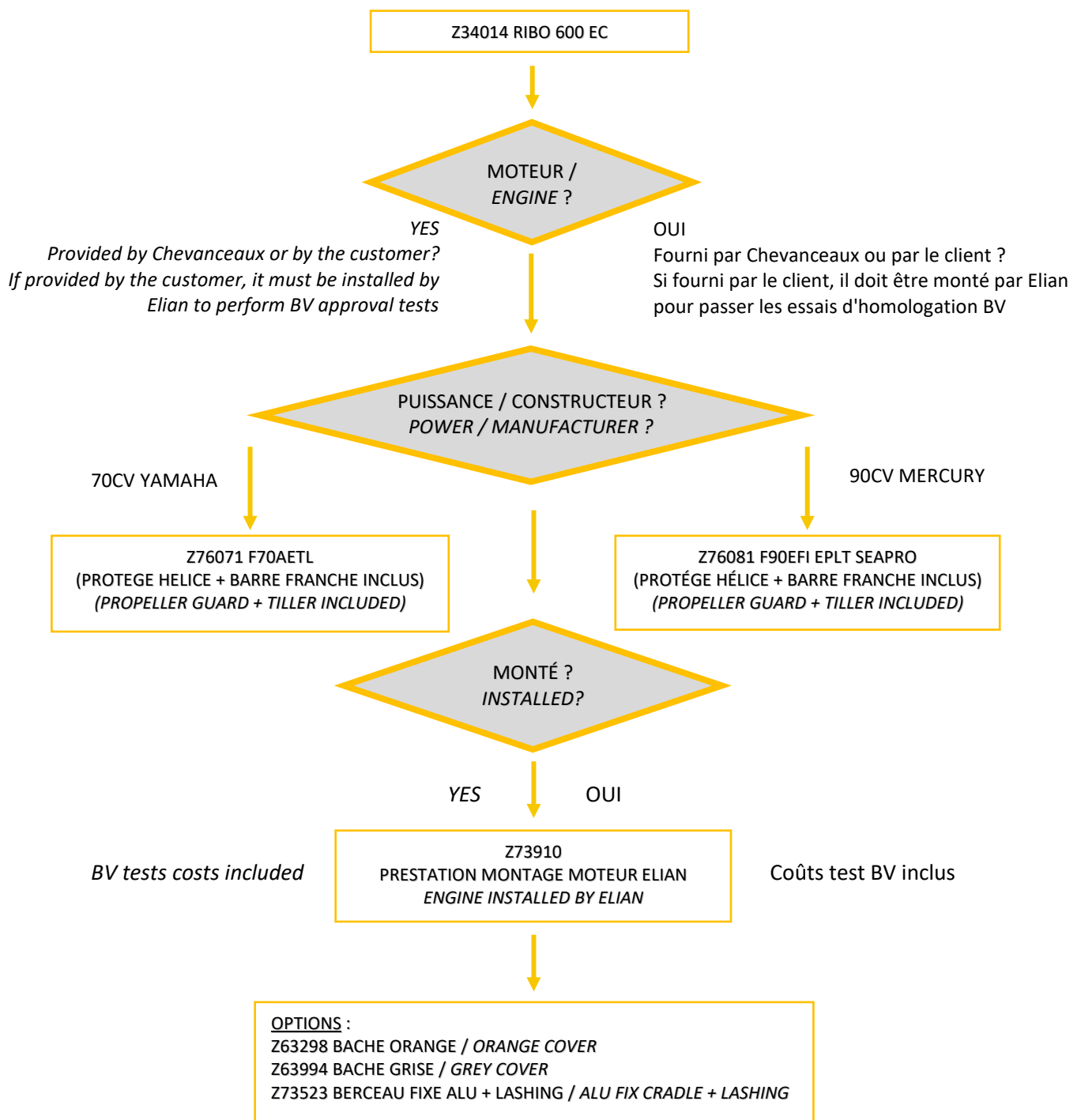
<b>TRANSOM</b>															
<ul style="list-style-type: none"> <li>. 2 self-bailers</li> <li>. Engine aluminium mounting plate</li> </ul>	<ul style="list-style-type: none"> <li>. Aluminium transom well</li> <li>. Engine wooden plate</li> </ul>														
<b>HANDLING</b>															
<ul style="list-style-type: none"> <li>. 2 inside lifelines</li> </ul>	<ul style="list-style-type: none"> <li>. 1 peripheral outside lifeline</li> <li>. 2 paddles' supports</li> </ul>														
<b>SELF RIGHTING SYSTEM</b>															
<ul style="list-style-type: none"> <li>. Self-righting frame on transom</li> <li>. Self-righting buoyancy</li> <li>. CO<sup>2</sup>/N<sup>2</sup> inflation system</li> </ul>															
<b>CONSOLE / SEATING</b>															
<ul style="list-style-type: none"> <li>. Steering console</li> <li>. 1 pilot jockey seat</li> <li>. 1 crew jockey seat + handles (2 persons)</li> </ul>															
<b>EQUIPMENT FIXED TO THE RESCUE BOAT</b>															
<ul style="list-style-type: none"> <li>. Towing line (50m)</li> <li>. Positioning light</li> </ul>	<ul style="list-style-type: none"> <li>. Rescue quoits (2)</li> <li>. Radar reflector</li> <li>. Boarding ladder</li> <li>. Boat hook</li> <li>. Bow cover</li> </ul>														
<b>OTHER EQUIPMENT</b>															
<ul style="list-style-type: none"> <li>. Compass</li> <li>. Sponge (2)</li> <li>. First aid kit</li> <li>. Search light</li> <li>. Thermal protective aid (2)</li> </ul>	<ul style="list-style-type: none"> <li>. Whistle</li> <li>. Sea anchor</li> <li>. Floating knife</li> <li>. Electrical torch</li> <li>. Bailer</li> <li>. Repair kit</li> <li>. Fire extinguisher</li> <li>. Torch spare bulb &amp; batteries</li> <li>. Paddles (2)</li> <li>. Pump</li> <li>. Manual</li> <li>. Equipment bag</li> </ul>														
<b>OPTIONS</b>															
<ul style="list-style-type: none"> <li>. Overall cover</li> <li>. Release hook: SWL ≥ 1500 kg</li> <li>. <b>Engines:</b> <table style="width: 100%; border: none;"> <tr> <td style="width: 50%;">Yamaha F70 AETL / 4 strokes</td> <td style="width: 50%;">Towing force: 376 daN</td> </tr> <tr> <td></td> <td>Engine weight: 119 kg</td> </tr> <tr> <td>Mercury SeaPro F90 EFI ELPT</td> <td>Towing force: 580 daN</td> </tr> <tr> <td></td> <td>Engine weight: 165 kg</td> </tr> </table> </li> <li>. Propeller pitch: <table style="width: 100%; border: none;"> <tr> <td style="width: 30%;">Yamaha</td> <td style="width: 35%;">70 HP: 13 5/8 x 13</td> <td style="width: 35%;"></td> </tr> <tr> <td>Mercury</td> <td>90 HP: 14 x 17 x 4</td> <td></td> </tr> </table> </li> </ul> <p><b>MAXIMUM SPEED</b> with MERCURY engine: empty load (1 passenger) 30 knots full load (6 passengers) 26,5 knots</p>		Yamaha F70 AETL / 4 strokes	Towing force: 376 daN		Engine weight: 119 kg	Mercury SeaPro F90 EFI ELPT	Towing force: 580 daN		Engine weight: 165 kg	Yamaha	70 HP: 13 5/8 x 13		Mercury	90 HP: 14 x 17 x 4	
Yamaha F70 AETL / 4 strokes	Towing force: 376 daN														
	Engine weight: 119 kg														
Mercury SeaPro F90 EFI ELPT	Towing force: 580 daN														
	Engine weight: 165 kg														
Yamaha	70 HP: 13 5/8 x 13														
Mercury	90 HP: 14 x 17 x 4														

## SPARE PARTS

- . Z7608 MERCURY 90 (includes propeller guard) . Z63298 Orange overall cover
- . Z6707 YAMAHA 70 (includes propeller guard) . Z63994 Grey overall cover
- . Z73909 Engine installation service



Tolérances sur les dimensions et poids ±5%  
Tolerances on dimensions and weight ±5%



### Processus de saisie de commande / Order entry process

<b>Approvals:</b>	<b>EC – TC</b>
-------------------	----------------

RIBO 600.doc	Issue: 11	Date: 27/05/2021
--------------	-----------	------------------

Dimensions and weight +/- 5%  
SURVITEC SAS reserves the right to change specification without notice.  
For installation, add minimum +10mm for clearance to dimensions of the container.