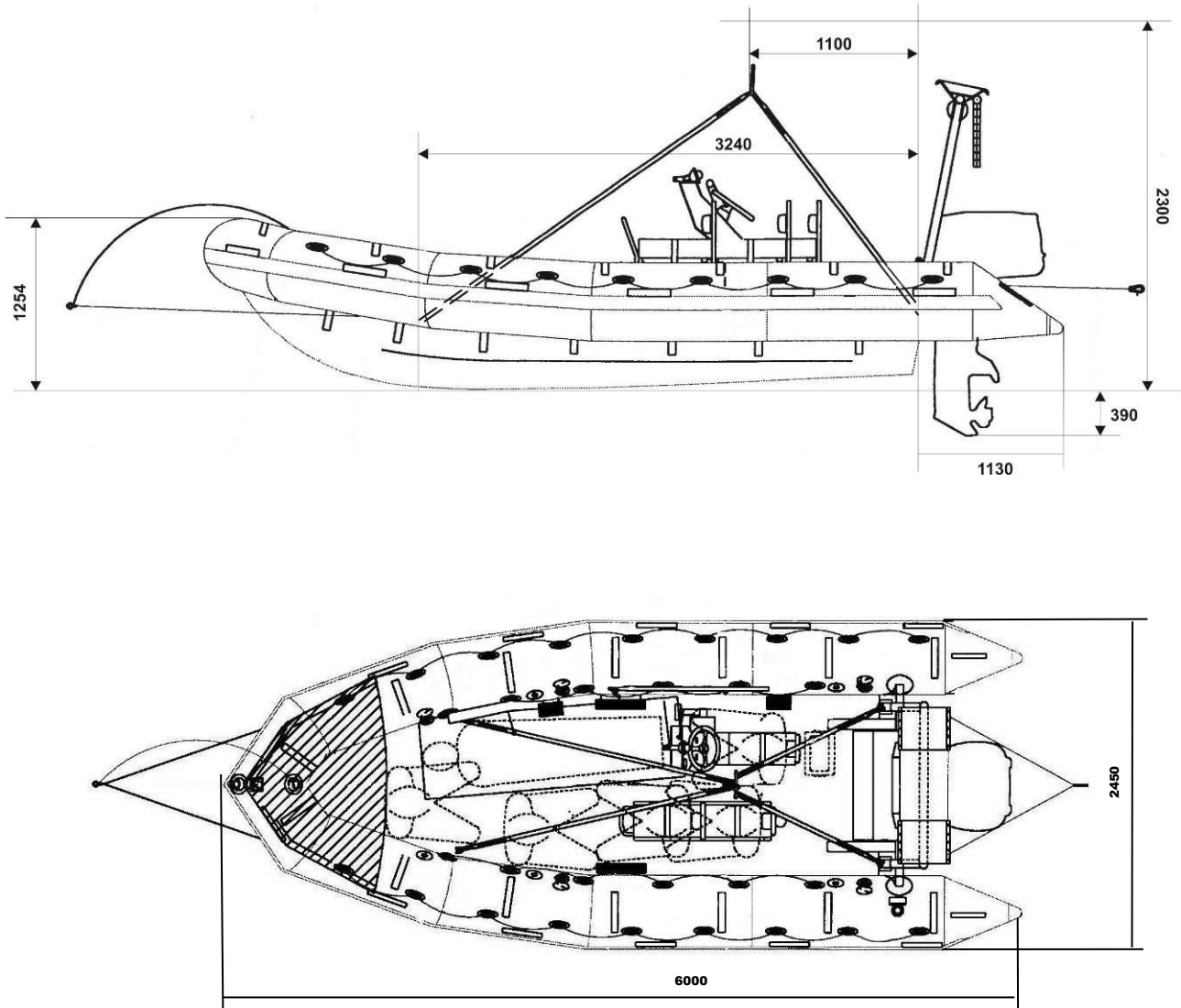


RESCUE BOAT RIBO 600 SLING



Overall dimensions with lifting system

RIBO 600.doc

Issue: 9

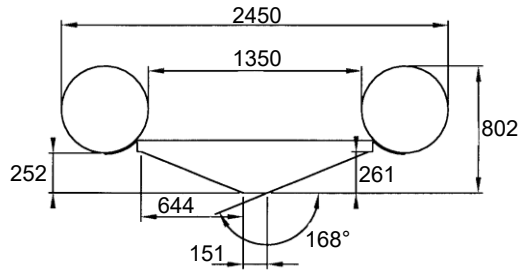
Date: 12/03/2020

Dimensions and weight +/- 5%
 SURVITEC SAS reserves the right to change specification without notice.
 For installation, add minimum +10mm for clearance to dimensions of the container.

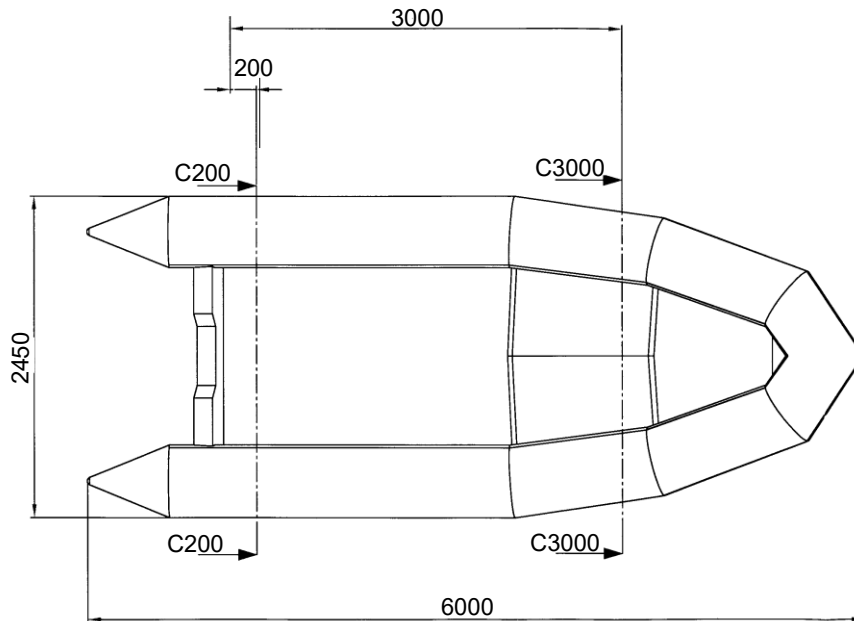
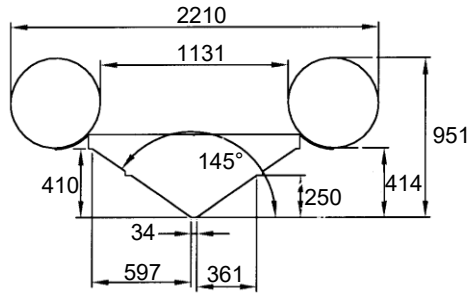
CAPACITY				
Number of persons: 6			Buoyancy volume: 2600 l / 92 cft	
DIMENSIONS				
Length		Width		Buoyancy diameter
Overall	Inside	Overall	Inside	0.550 m / 22"
6 m / 19'08"	4.47 m / 14'08"	2.45 m / 8'	1.35 m / 4'05"	
SAFETY / INFLATION				
. 5 airtight compartments		. 5 inflation valves		. 5 overpressure valves
WEIGHT				
With equipment & batteries		With equipment, engine (90 HP) & fuel		Operational weight with 6 passengers (90 HP)
494 kg / 1089 lbs		785 kg / 1730 lbs		1283 kg / 2828 lbs
ENGINE				
Shaft length		Engine power		Fuel tank
long		70 HP	75 HP	90 HP
				93 l 24.5 l USCG
TOWING				
. 2 bow towing rings on hull		. 1 bow towing V with on load release shackle		
. 2 towing points on transom		. 1 aft towing V with snap hook		
HOISTING				
. 2 bow lifting points		. 2 aft lifting points on transom		. 1 lifting sling
FABRIC				
. Neoprene orange fabric		. Buoyancy		
. Reflective tapes		. Peripheral rubbing strake		
HULL				
. GRP composite rigid orange hull		. Reflective tapes		
. 1 hull drain				

TRANSOM	
. 2 self-bailers	. Aluminium transom well
. Engine aluminium mounting plate	. Engine wooden plate
HANDLING	
. 2 inside lifelines	. 1 peripheral outside lifeline
	. 2 paddles' supports
SELF RIGHTING SYSTEM	
. Self-righting frame on transom	. Self-righting buoyancy
	. CO ² /N ² inflation system
CONSOLE / SEATING	
. Steering console	. 1 pilot jockey seat
	. 1 crew jockey seat + handles (2 persons)
EQUIPMENT FIXED TO THE RESCUE BOAT	
. Towing line (50m)	. Rescue quoits (2)
. Positioning light	. Radar reflector
	. Boarding ladder
	. Boat hook
	. Bow cover
OTHER EQUIPMENT	
. Compass	. Whistle
. Sponge (2)	. Sea anchor
. First aid kit	. Floating knife
. Search light	. Electrical torch
. Thermal protective aid (2)	
	. Bailer
	. Repair kit
	. Fire extinguisher
	. Torch spare bulb & batteries
	. Overall cover
	. Pump
	. Manual
	. Equipment bag
	. Paddles (2)
OPTIONS	
. Release hook: SWL ≥ 1500 kg	
. Engines:	Yamaha F70 AETL / 4 strokes
	Evinrude E75DPL / 2 strokes
	Evinrude E90DPL / 2 strokes
	Towing force: 376 daN
	Engine weight: 119 kg
	Towing force: 451 daN
	Engine weight: 145 kg
	Towing force: 472 daN
	Engine weight: 145 kg
. Propeller pitch:	Yamaha 70 HP: 13 5/8 x 13
	Evinrude 75 HP: 13.25 x 13
	90 HP: 13.25 x 13

COUPE / CUT
C200 - C200



COUPE / CUT
C3000 - C3000



Hull profile

Approvals:	EC – TC
-------------------	----------------

RIBO 600.doc	Issue: 9	Date: 12/03/2020
--------------	----------	------------------

Dimensions and weight +/- 5%
 SURVITEC SAS reserves the right to change specification without notice.
 For installation, add minimum +10mm for clearance to dimensions of the container.