

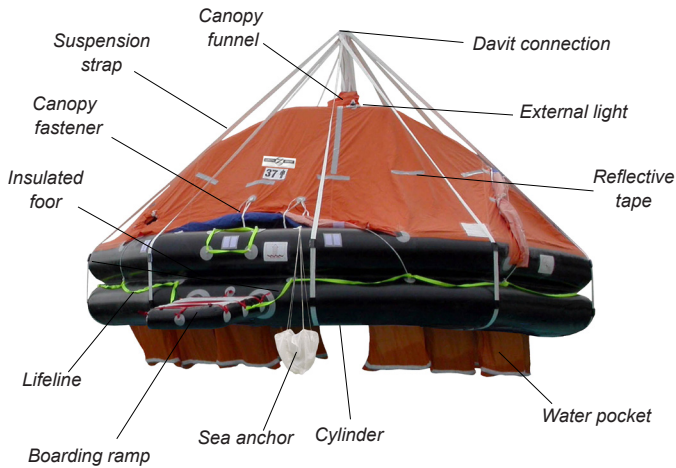
THROW OVER SELF RIGHTING & DAVIT LAUNCHED SELF RIGHTING

6 up to 37 persons



COMMERCIAL LIFERAFTS

Designed for **THROW OVER & DAVIT LAUNCHED** liferafts, the **SELF-RIGHTING** solution allows the liferaft to automatically self-right, even in case of upside down inflation.



CHARACTERISTICS

- ▶ Manufactured with a durable polyurethane fabric
- ▶ Assembled using Thermobonding™ (advanced hot assembly technique), our liferafts are:
 - Consistent (computer-controlled technique)
 - Inert to ageing factors in the marine environments
 - Easy to service and fit in light glass reinforced plastic container
 - Equipment packs sealed in strong watertight bags, secured inside the liferaft
 - Approved EPIRB on request
- ▶ Paramount evacuation time

PACKING

- ▶ Our SR liferafts are packed either in:
 - **ROUND** container or
 - **STACKABLE** round container (DL SR only)



ROUND - DL SR



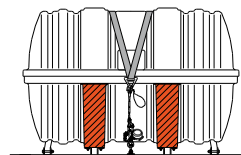
ROUND - TO SR



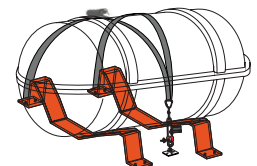
STACKABLE container - DL SR

STORAGE ONBOARD SHIP

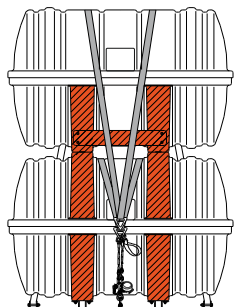
- ▶ Our liferafts are stored on:
 - metallic deck cradle (aluminum or galvanized steel)
 - GRP deck cradle (single or double)
 - tilting cradle
 - specially designed cradles
- ▶ Liferaft secured on the cradle with lashing & hydrostatic release unit



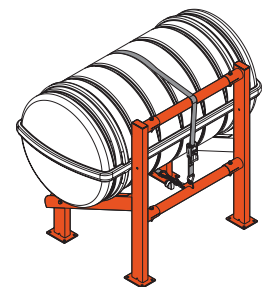
Single GRP storage



Metallic deck cradle



Double GRP storage DL SR



Tilting cradle TO SR

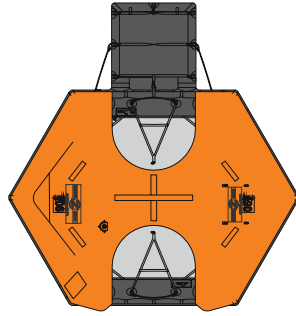
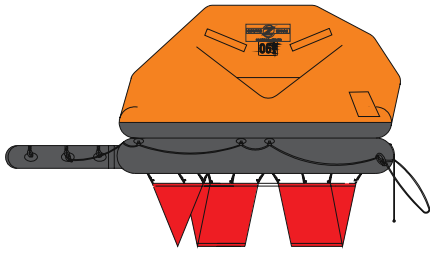
REGULATION

DESIGNED AND MANUFACTURED IN CONFORMITY WITH:
 . HSC code
 . LSA code
 APPROVALS: EC(MED)
 USCG / TC / RMRS (TOSR)



ILLUSTRATION OF SELF-RIGHTING LIFERAFTS

6 TO SR



6 TO SR



THROW OVER SELF-RIGHTING (TO SR) TECHNICAL DATA

CAPACITY	ROUND container		
	WEIGHT A Pack / B Pack	DIMENSIONS L x w x h (mm)	
		A Pack	B Pack
6	72kg / 58kg	1160 x 560 x 513	1160 x 560 x 513
8	85kg / 69kg	1160 x 560 x 513	1160 x 560 x 513
10	98kg / 73kg	1275 x 610 x 590	1160 x 560 x 513
12	110kg / 82kg	1275 x 610 x 590	1160 x 560 x 513
25	200kg / 150kg	1450 x 800 x 740	1530 x 680 x 620
37	305kg / 209kg	1500 x 950 x 945	450 x 800 x 740

DAVIT LAUNCHED SELF-RIGHTING (DL SR) TECHNICAL DATA

CAPACITY	STACKABLE ROUND container - SINGLE storage		
	WEIGHT A Pack / B Pack	DIMENSIONS L x w x h (mm)	
		A Pack	B Pack
25	260kg / 200kg	1450 x 820 x 915	1530 x 820 x 796
37	370kg / 270kg	1500 x 955 x 1115	1560 x 915 x 1020

CAPACITY	STACKABLE ROUND container - DOUBLE storage		
	WEIGHT A Pack / B Pack	DIMENSIONS L x w x h (mm)	
		A Pack	B Pack
25	480kg / 360kg	1450 x 820 x 1650	1530 x 820 x 1420
37	700kg / 500kg	1500 x 955 x 2060	1560 x 915 x 1865

SURVITEC SAS reserves the right to change specification without notice. For installation, add minimum +10mm for clearance to dimensions of the container.

SURVITEC SAS - Route de Chatenet - 17210 Chevanceaux - FRANCE - www.surviteczodiac.com / surviteczodiac@survitecgroup.com